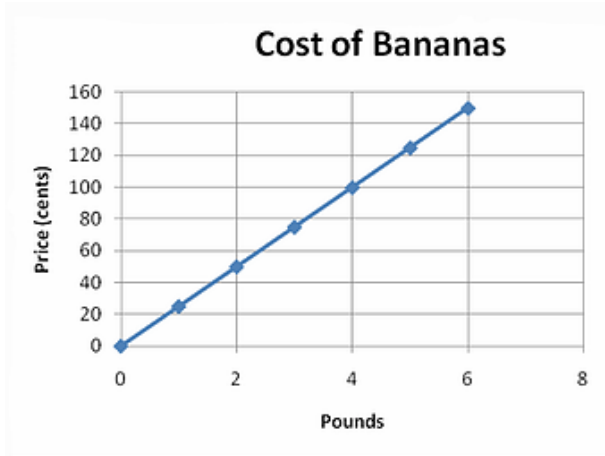
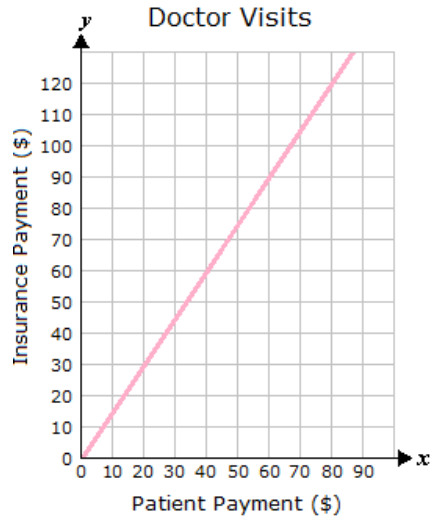


For each of the graphs below, determine if it is proportional. If it is, write an equation. If it is not, explain why.

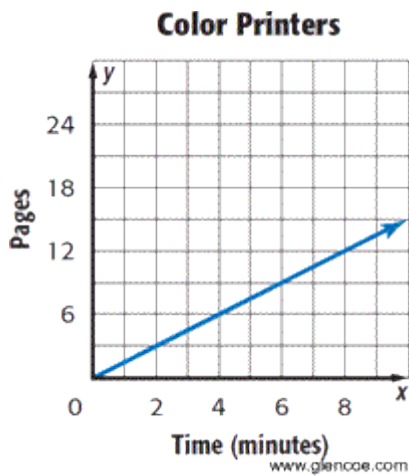
1. Equation:



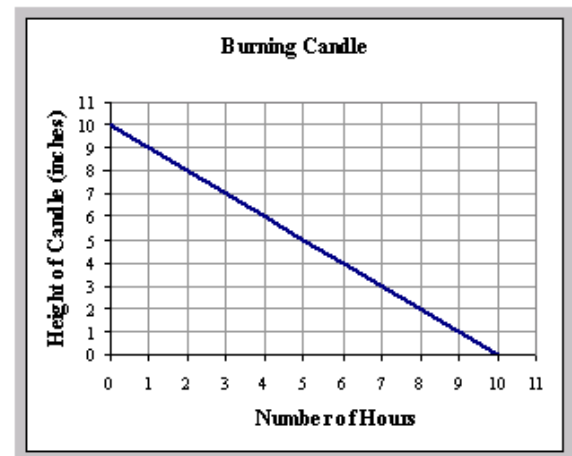
2. Equation:



3. Equation:



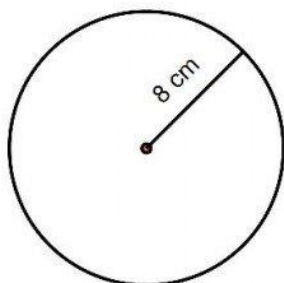
4. Equation:



For questions 5-8, calculate the area and circumference of the circles.

5.

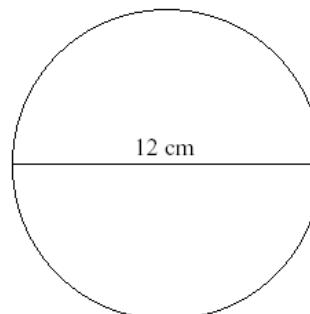
Area:



Circumference:

6.

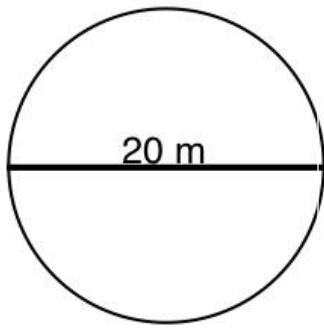
Area:



Circumference:

7.

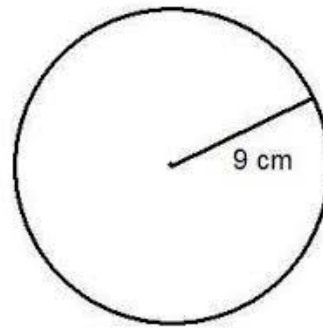
Area:



Circumference:

8.

Area:



Circumference:

9. Use the formula, $c = \pi d$, to find the circumference of a circle with the given diameter.

Diameter	Circumference
2	
4	
10	

10. Is the circumference proportional to the diameter? If so, what is k ? Explain how you know.